

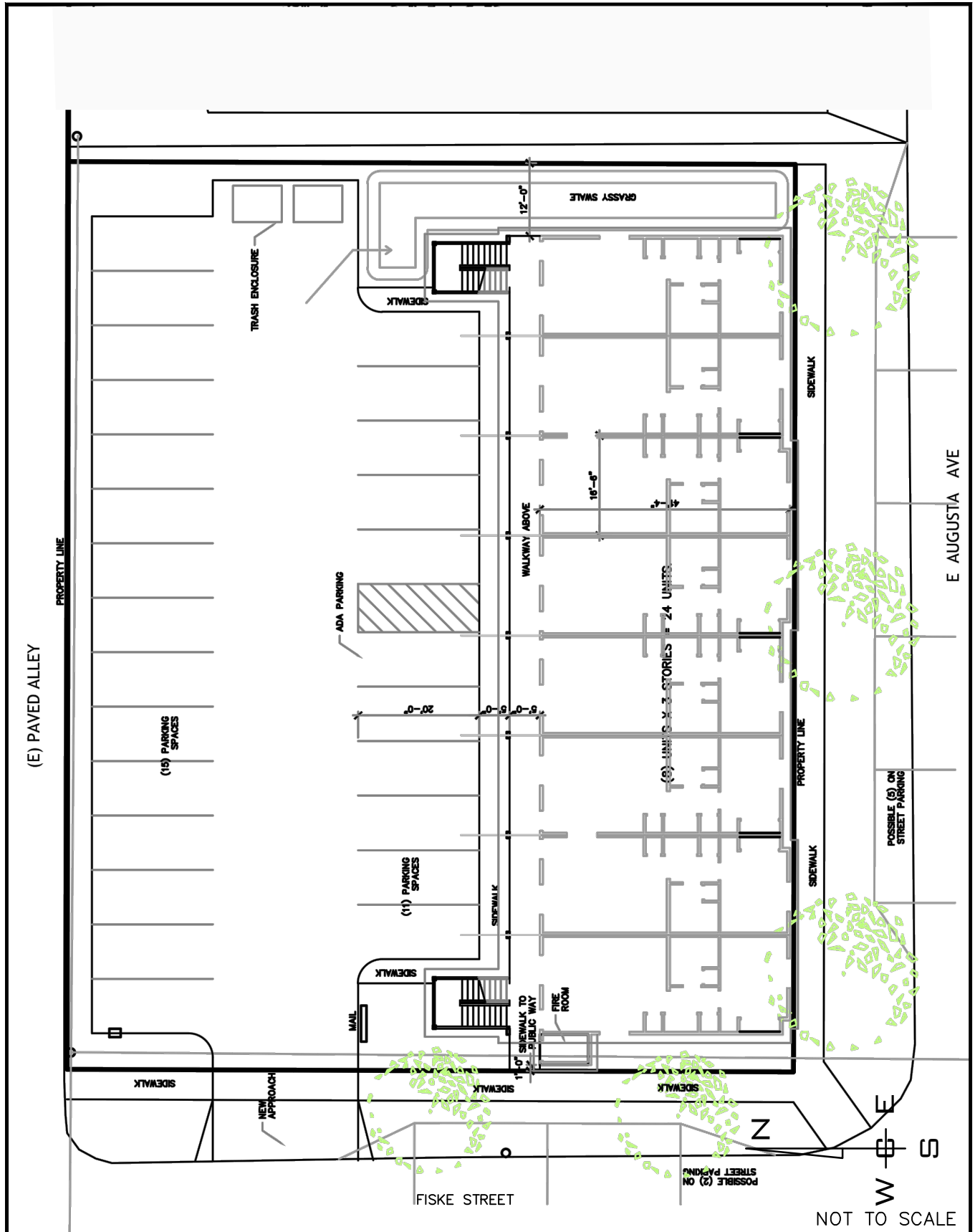
PROJ #: 20-2776  
 DATE: 12/22/20  
 DRAWN: KMK  
 APPROVED: TRW

**FIGURE 1**

**TRIP GENERATION AND DISTRIBUTION**  
**FISKE APARTMENT**  
**1606 NORTH FISKE STREET**  
**SPOKANE, WASHINGTON**

**VICINITY MAP**

**WCE**  
 WHIPPLE CONSULTING ENGINEERS  
 CIVIL AND TRANSPORTATION ENGINEERING  
 21 S. PINES ROAD  
 SPOKANE VALLEY, WASHINGTON 99206  
 PH: 509-893-2617 FAX: 509-926-0227



PROJ #: 20-2776  
 DATE: 12/22/20  
 DRAWN: KMK  
 APPROVED: TRW

**TRIP GENERATION AND DISTRIBUTION**  
**FISKE APARTMENT**  
 1606 NORTH FISKE STREET  
 SPOKANE, WASHINGTON

**FIGURE 2**

**PRELIMINARY SITE PLAN**

**WCE**  
 WHIPPLE CONSULTING ENGINEERS  
 CIVIL AND TRANSPORTATION ENGINEERING  
 21 S. PINES ROAD  
 SPOKANE VALLEY, WASHINGTON 99206  
 PH: 509-893-2617 FAX: 509-926-0227